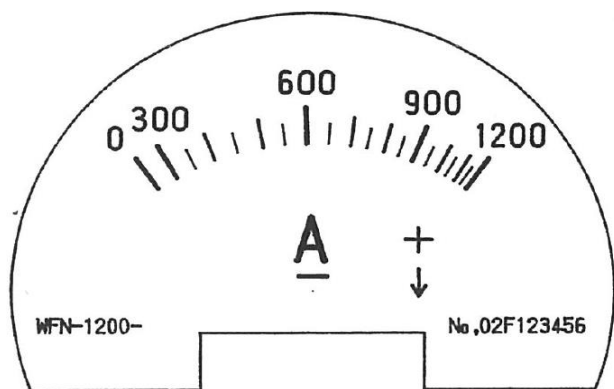


Specifications

Model code	WF-N-1200-35
Measurement current (Max.)	1200A DC
Between legs	35mm
Product thickness	5mm
Insulation resistance	1000MΩ or more (500VDC megger) between meter / leg and grip hand shaft
Withstand voltage	2200V AC for 1 minute between meter / leg and grip hand shaft
Accuracy	±5%
Pointer runout angle	Approx. 70 deg
Operating temperature	-10~60°C
Weight	Approx. 450g
Dimensions	Meter / leg : 90(D) x 100(L)mm Total length : Approx. 850mm

Scale



Dimensions

