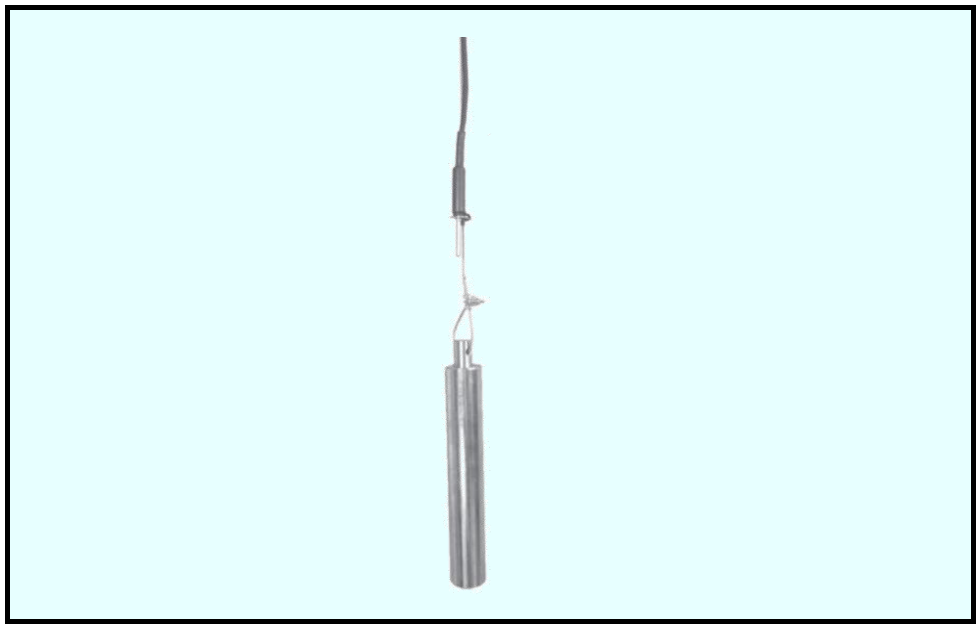


RTD (Resistance Temperature Detectors) For thermal storage tank measurement with wire anchor

RWA



RWA is fully waterproof type Resistance temperature detector, which can be used for temperature measurement by throw in to thermal storages or tanks.
Attached anchor stabilize the measurement position in the flow.

Features

- ★ With wire anchor to stabilize
- ★ Please contact for special specifaions

Ordering code

RWA - A - S - 40 -

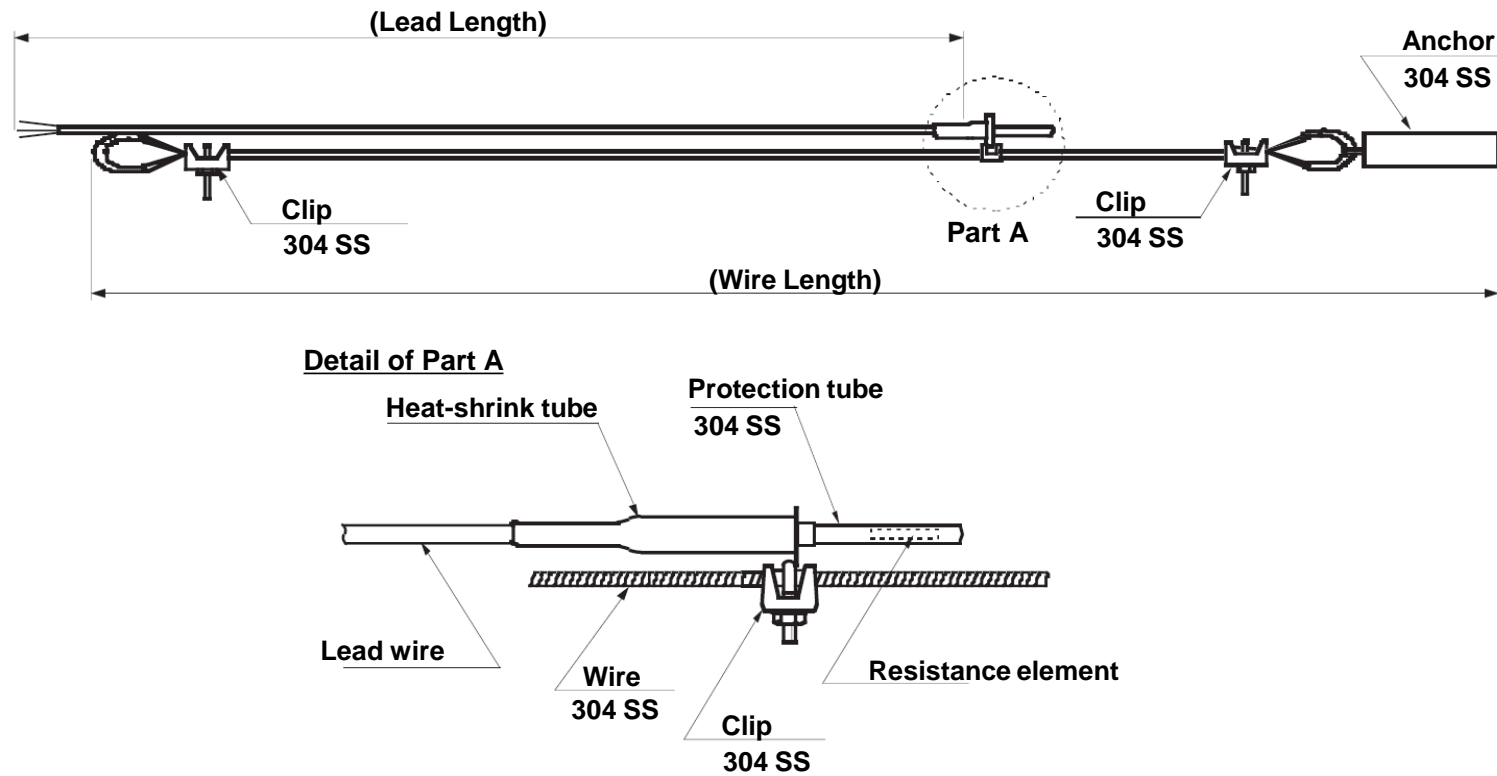
Tolerance	Temp. range	Number of sensor	Number of Element	Lead wire coating	Lead length	Wire length	Anchor	Special	Decsription	
A									Tolerance	Class A, Pt100Ω
	L								Temperature range	0 to +50°C
	M									-10 to +100°C
	H									*Vinyl coating lead wire -20 to +200°C *Teflon coating lead wire *Special range available
		□□							Number of sensor	Max. number depends on spec.
			S						Number of element	Single element
				VL					Lead wire coatings	Vinyl coating
				HV						Heat resistant Vinyl coating
				TF						Teflon coating
					01				Lead length	Length below Shrinkable tube 1m
					03					Length below Shrinkable tube 3m
					05					Length below Shrinkable tube 5m
					10					Length below Shrinkable tube 10m
					□□					Please inform us for other than above
						□□□			Wire length	Wire length (m) φ3mm 304 SS
							40		Anchor	φ40mm x 300mm (304 SS)
								S	Special	Special specification for example : 1) High accuracy Pt100Ω element 2) Special temperature range 3) etc.

*Note : Able to adjust sensor position by clip

Common Specifications

Element	Pt100Ω resistance element
Wiring	3-wire
Tolerance	Class A : $\pm(0.15 + 0.002 t)$
Measuring current	1mA
Number of element	Single
Insulation resistance	100MΩ or more with 125V
Anchor weight	Approx. 3kg

Dimensions



* Specification is subject to change without notice