



This clamp type CT can be installed without disconnecting cables. It is compatible with rated currents of 100A, 200A, 400A, and 600A. It greatly reduces installation time regardless of whether it is a new installation or a replacement.

Features

- ★ Clamp-type design enables live-line installation
- ★ One-touch attachment
- ★ Internal protection circuit for open secondary circuit

Supported models

WTM, WPC, WLD, WMS, WSW

Ordering code

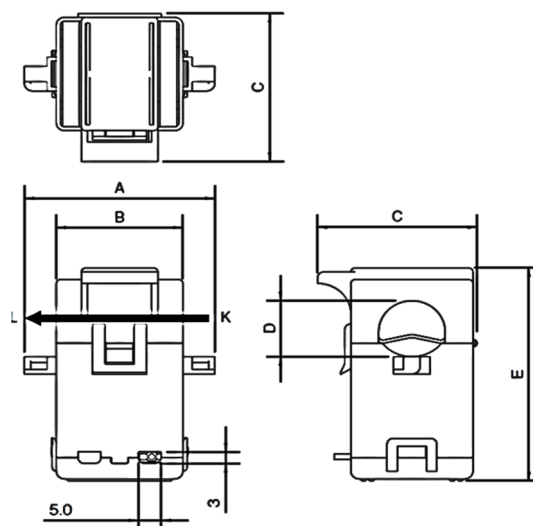
WCTF-□□□A - □

Series	Rated current	Supplied cable	Description
WCTF			Clamp Type CT
	100		For rated primary current 100A
	200		For rated primary current 200A
	400		For rated primary current 400A
	600		For rated primary current 600A
		K	With supplied cable (for WTM,WPC,WMS,WSW)
		N	Without supplied cable (for WLD)

Specifications

Rated primary current	WCTF-100A 100A WCTF-200A 200A WCTF-400A 400A WCTF-600A 600A
Rated frequency	50/60Hz
Allowed current	WCTF-100A 200% continuous WCTF-200A 150% continuous WCTF-400A 125% continuous WCTF-600A 130% continuous
Ratio error	±1% (Rating 100%), ±1.2% (Rating 10%)
Max Voltage	600V (300V in case of bare wire)
Withstand voltage	2200V AC for 1 minute
Insulation resistance	Not less than 100MΩ (500VDC megger) between CT and output
Output protection	7.5V clamp device
Output lead	Supplied cable (WCTF-TC-00)
Operating temperature/ humidity	-20 to 55°C, 80% RH
Weight	WCTF-100A Approx 85g WCTF-200A Approx 190g WCTF-400A Approx 310g WCTF-600A Approx 360g

Dimensions



(Unit : mm)

Model Code	A	B	C	D	E
WCTF-100A-K	45.9	30.5	38.4	14.5	55.2
WCTF-200A-K	52.5	35.5	56.9	24.0	76.2
WCTF-400A-K	53.5	35.5	74.5	35.5	92.95
WCTF-600A-K					

Accessories

Supplied Cable (WCTF-TC-00)
For WCTF-□□□A-K

