



Features

- ★ BCD Parallel input
- ★ With latch
- ★ Leading zero suppression
- ★ Bright LED, 14.2mm (Red)
- ★ Power supply, 24Vdc

Ordering code

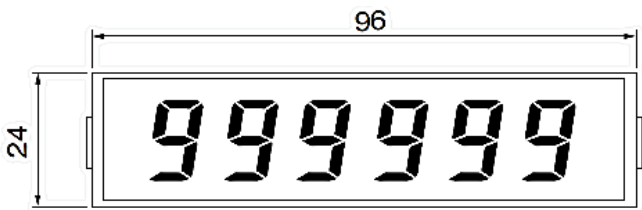
AI - 416

Specifications

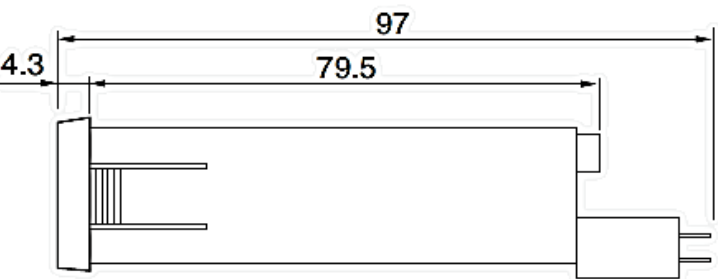
Input	Parallel BCD Input 24Vdc ($0 \leq L \leq 2$, $20 \leq H \leq 24$)
Zero display	Leading zero suppression (option)
Display	999999 (6 digits) LED (red) 14.2mm
Decimal point	Able to set to any digit
External control	Latch Positive logic : Latched BCD input is displayed with the latch and 24V terminals shorted or at 24V. Negative logic : Latched BCD input is displayed with the latch and 0V terminals shorted or at 0V.
Power supply	24Vdc $\pm 10\%$
Operating temperature	0 to 50°C
Operating relative humidity	35 to 85% (non-condensing)
Power consumption	Approx. 90mA
Dimensions	96mm(W) x 24mm(H) x 97mm(D) DIN size
Weight	Approx. 130g

Dimensions

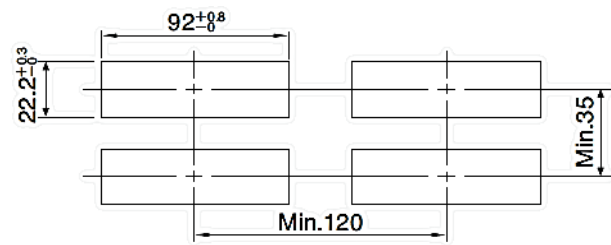
◆Front view



◆Side view



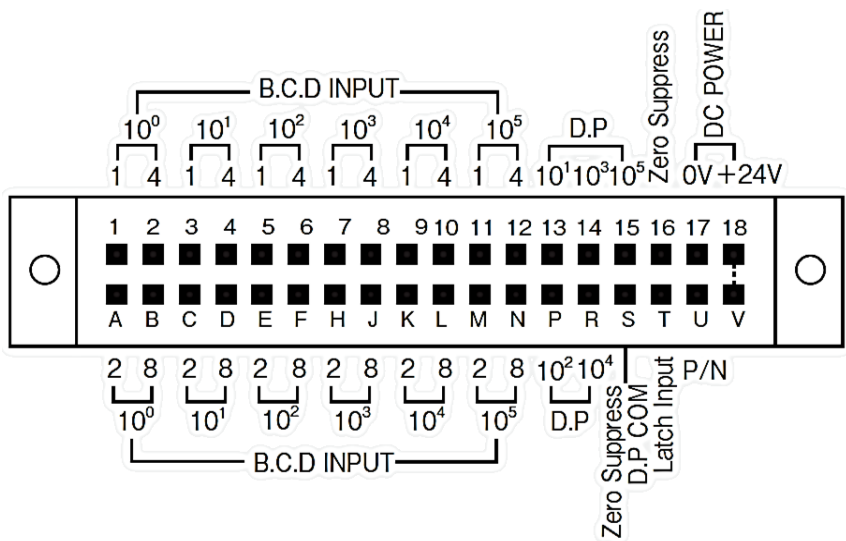
◆Panel cutout



Panel thickness 0.8 to 4.0mm

(Unit : mm)

Terminal Connections



* Specification is subject to change without notice